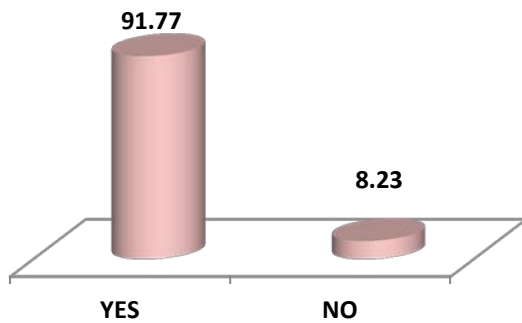




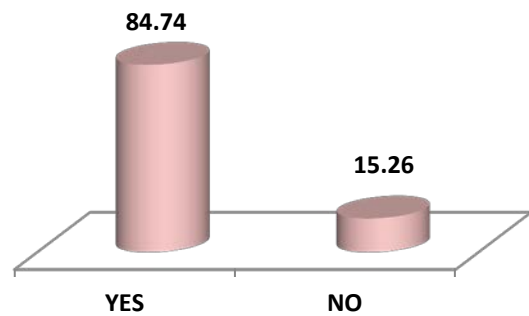
OVERALL REPORT FROM EXIT FEEDBACK 2019-20

A) Attainment of programme outcomes

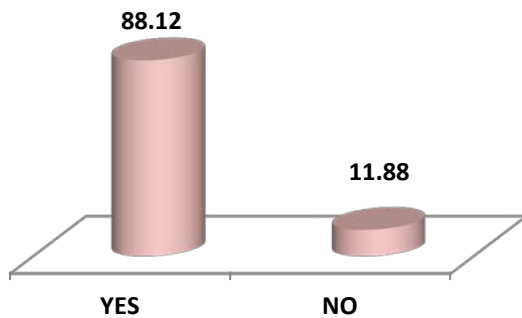
A1) Are you able to apply knowledge of mathematics, science and Engineering fundamentals?



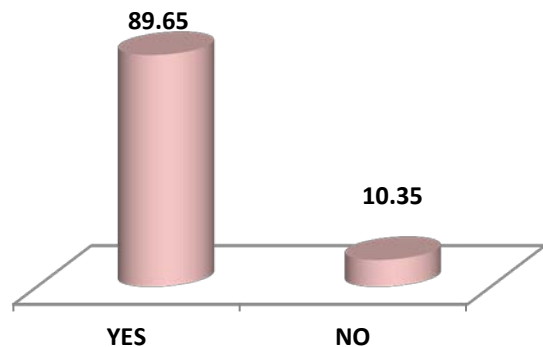
A2) Are you able to identify, formulate and solve complex engineering problems?



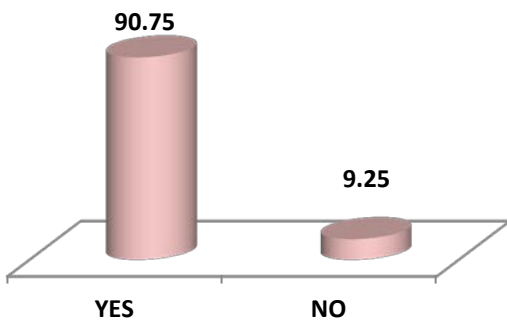
A3) Are you able to design, implement, and evaluate a system, component, process to meet desired needs with appropriate considerations such as economic / environmental?



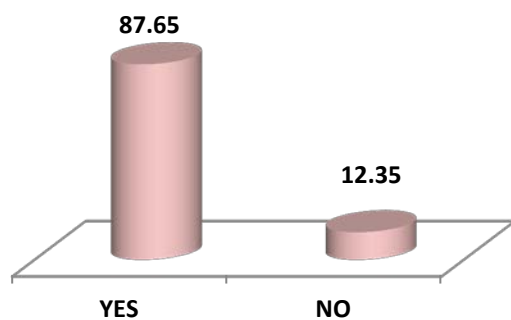
A4) Are you able to design and conduct experiments, as well as to analyze and interpret data in Engineering?



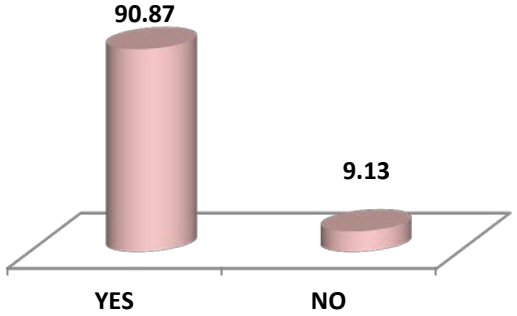
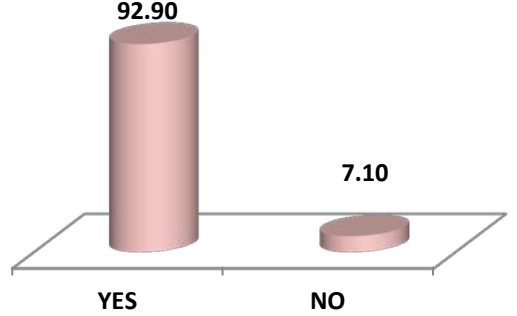
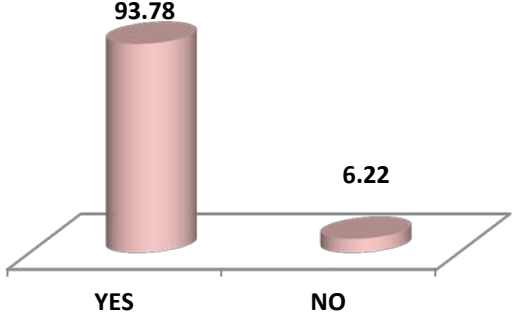
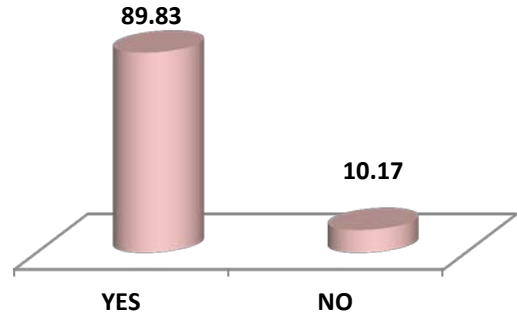
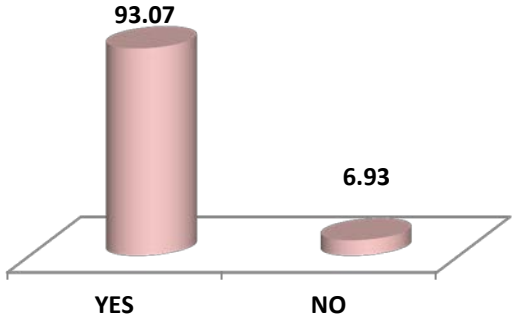
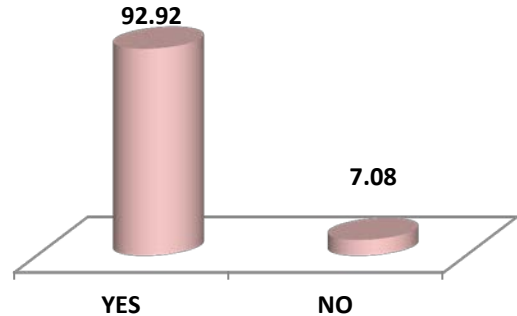
A5) Are you able to use the techniques, skills, and modern engineering & computational tools necessary for Engineering practices?



A6) Have you acquired broad education necessary to understand the impact of contextual knowledge on social and cultural issues?



OVERALL REPORT FROM EXIT FEEDBACK 2019-20

A7) Are you able to understand contemporary issues related to social & environmental context for sustainable development of engineering solutions?	A8) Are you able to understand the professional & ethical responsibilities?												
 <p>A 3D bar chart showing the percentage of responses for question A7. The 'YES' bar is significantly taller than the 'NO' bar. The values are 90.87 for YES and 9.13 for NO.</p> <table border="1"><thead><tr><th>Response</th><th>Percentage</th></tr></thead><tbody><tr><td>YES</td><td>90.87</td></tr><tr><td>NO</td><td>9.13</td></tr></tbody></table>	Response	Percentage	YES	90.87	NO	9.13	 <p>A 3D bar chart showing the percentage of responses for question A8. The 'YES' bar is significantly taller than the 'NO' bar. The values are 92.90 for YES and 7.10 for NO.</p> <table border="1"><thead><tr><th>Response</th><th>Percentage</th></tr></thead><tbody><tr><td>YES</td><td>92.90</td></tr><tr><td>NO</td><td>7.10</td></tr></tbody></table>	Response	Percentage	YES	92.90	NO	7.10
Response	Percentage												
YES	90.87												
NO	9.13												
Response	Percentage												
YES	92.90												
NO	7.10												
A9) Are you able to function effectively as an individual, as a member or leader in diverse & multidisciplinary teams?	A10) Are you able to communicate effectively?												
 <p>A 3D bar chart showing the percentage of responses for question A9. The 'YES' bar is significantly taller than the 'NO' bar. The values are 93.78 for YES and 6.22 for NO.</p> <table border="1"><thead><tr><th>Response</th><th>Percentage</th></tr></thead><tbody><tr><td>YES</td><td>93.78</td></tr><tr><td>NO</td><td>6.22</td></tr></tbody></table>	Response	Percentage	YES	93.78	NO	6.22	 <p>A 3D bar chart showing the percentage of responses for question A10. The 'YES' bar is significantly taller than the 'NO' bar. The values are 89.83 for YES and 10.17 for NO.</p> <table border="1"><thead><tr><th>Response</th><th>Percentage</th></tr></thead><tbody><tr><td>YES</td><td>89.83</td></tr><tr><td>NO</td><td>10.17</td></tr></tbody></table>	Response	Percentage	YES	89.83	NO	10.17
Response	Percentage												
YES	93.78												
NO	6.22												
Response	Percentage												
YES	89.83												
NO	10.17												
A11) Have you acquired understanding of engineering & management principles to manage projects?	A12) Have you recognize the need for, and an ability to engage in lifelong learning?												
 <p>A 3D bar chart showing the percentage of responses for question A11. The 'YES' bar is significantly taller than the 'NO' bar. The values are 93.07 for YES and 6.93 for NO.</p> <table border="1"><thead><tr><th>Response</th><th>Percentage</th></tr></thead><tbody><tr><td>YES</td><td>93.07</td></tr><tr><td>NO</td><td>6.93</td></tr></tbody></table>	Response	Percentage	YES	93.07	NO	6.93	 <p>A 3D bar chart showing the percentage of responses for question A12. The 'YES' bar is significantly taller than the 'NO' bar. The values are 92.92 for YES and 7.08 for NO.</p> <table border="1"><thead><tr><th>Response</th><th>Percentage</th></tr></thead><tbody><tr><td>YES</td><td>92.92</td></tr><tr><td>NO</td><td>7.08</td></tr></tbody></table>	Response	Percentage	YES	92.92	NO	7.08
Response	Percentage												
YES	93.07												
NO	6.93												
Response	Percentage												
YES	92.92												
NO	7.08												

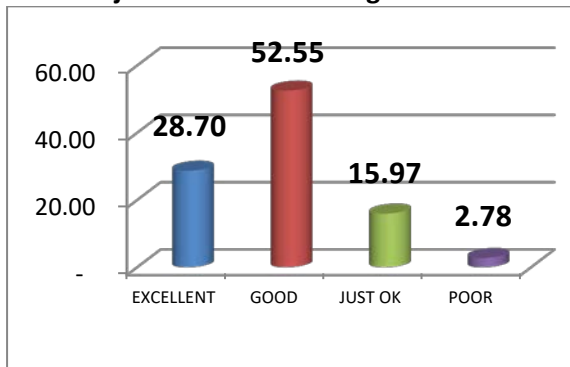


(Dr. A.V. Bapat)
Dean (Academic Matters)

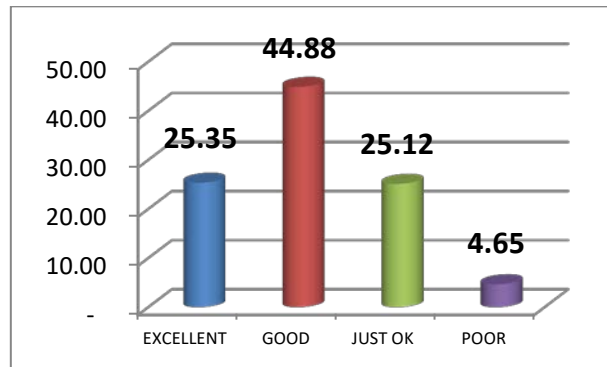
OVERALL REPORT FROM EXIT FEEDBACK 2019-20

B) Academic Experience

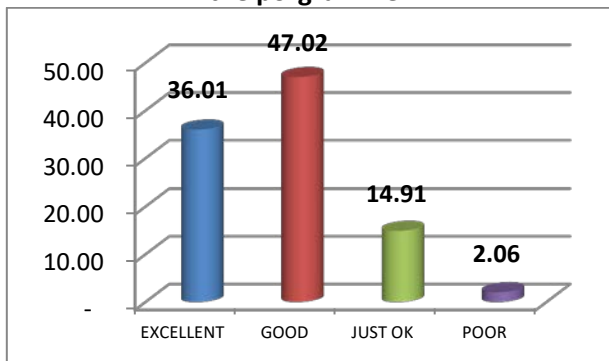
B1) The learning objectives of respective subjects were met during the course



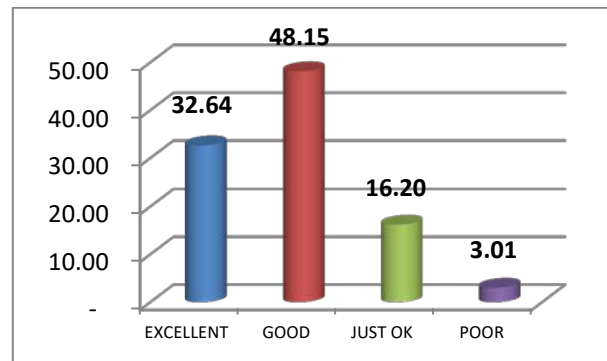
B2) Teaching Methodology used by the faculty was effective



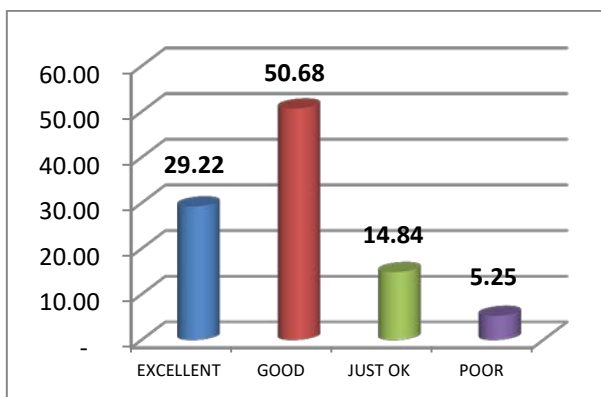
B3) Seminars, mini projects and projects were helpful to apply over all knowledge gained in the programme



B4) Faculty members supported me in academic and other matters.



B5) E- Material /other learning resources were made available by faculty and were useful

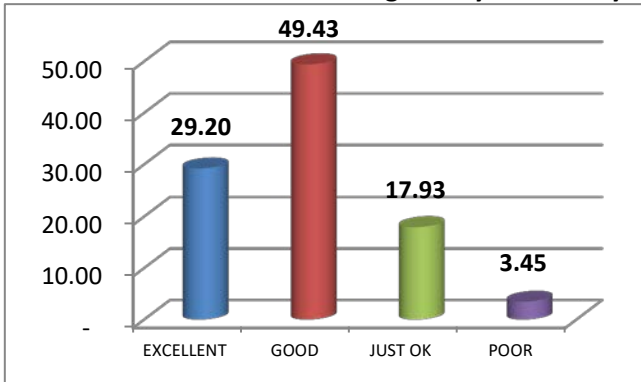


B6) The interaction with Professors from other reputed institutions who visited my department under Visiting Professor in my learning



OVERALL REPORT FROM EXIT FEEDBACK 2019-20

B7) E-Material/Resources links available on internet as well in offline mode were given by the faculty



(Dr. A.V. Patil)
Dean (Academic Matters)

C) Evaluation

C1) I was made aware about the various assessment methods during the course.



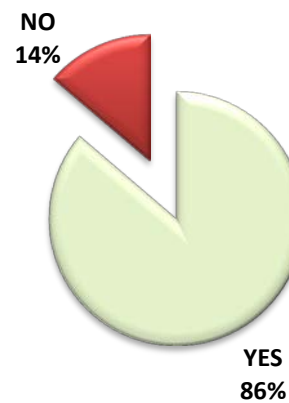
C2) I was well aware of the relevance of formative and internal assessment methods



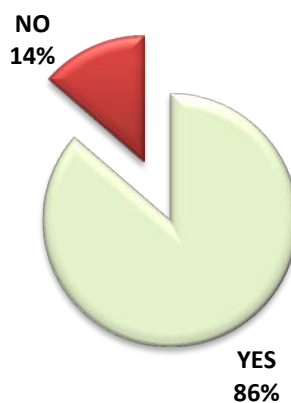
C3) The assessment methods used in theory and practical's were just and satisfactory



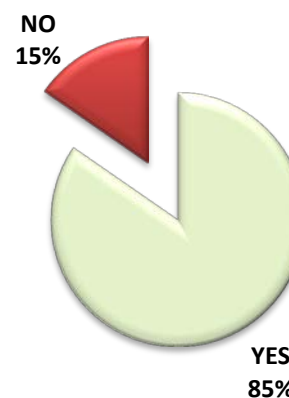
C4) Faculty members provided me with sufficient and specific feedback on my performance after every formative examination including showing the answer books after valuation



C5) My performance was assessed against the learning objectives



C6) A faculty member personally observed me during conduct of practicals



OVERALL REPORT FROM EXIT FEEDBACK 2019-20

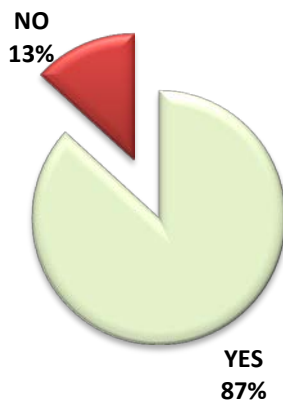
C7) The formative and summative assessment are well placed in the curriculum



C8) Examination and results are declared as per specified dates in the Academic Calendar



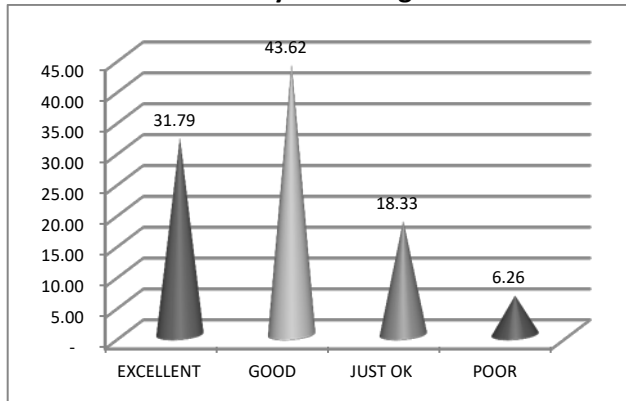
C9) The evaluation in the whole academic program was unbiased and transparent.



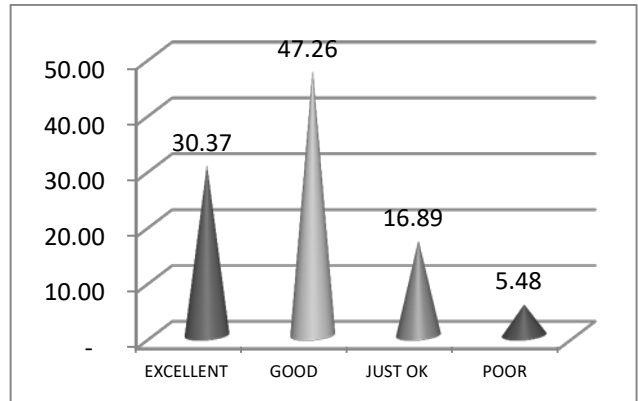
Dr. A.V. Patil
Dean (Academic Matters)

D) Other activities arranged by the department to enrich the academic immersion

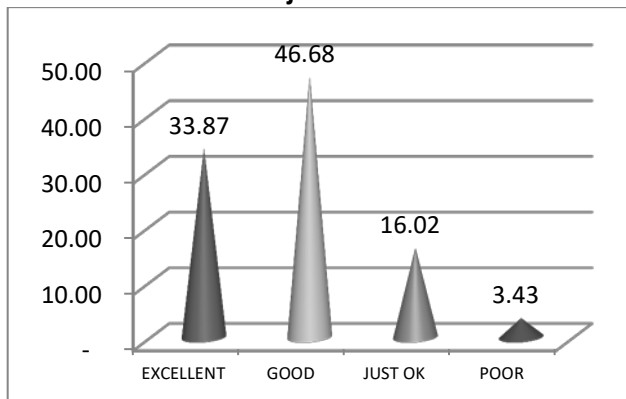
D1) Appropriate number of industrial visits were arranged by the department and was value addition to my knowledge



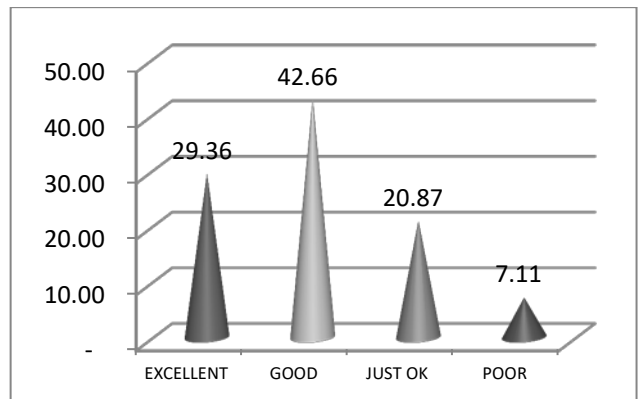
D2) Personality and technical development program were arranged by the college/department



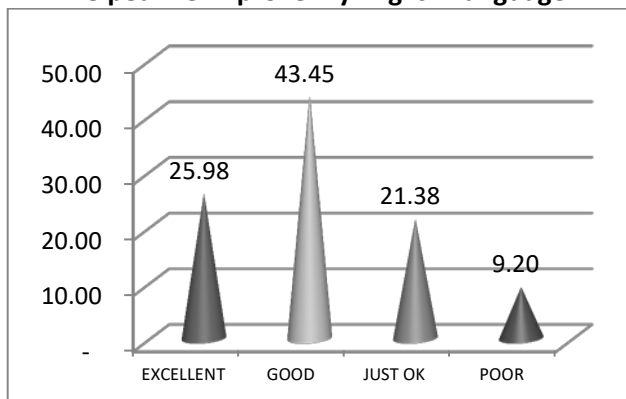
D3) Student policies & motivation like paper presentations/ special projects/site visits/laptop to the topper students helps in achieving learning objectives.



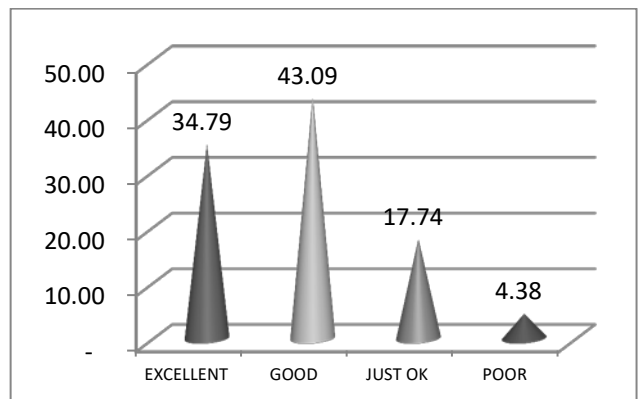
D4) Get-Set-Go program held in first year helped me to improve my personality.



D5) Talk in English™ program held in Second Year helped me improve my English Language.

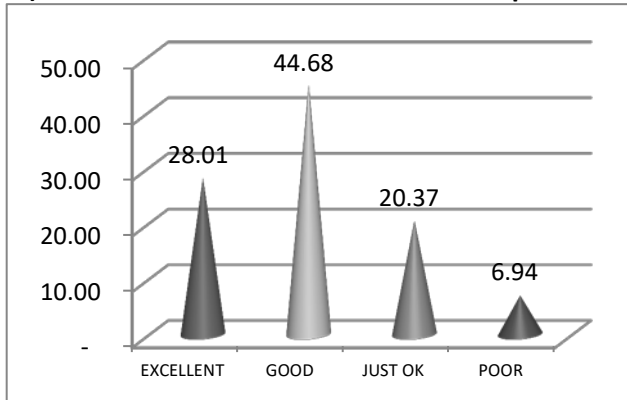


D6) Content of Campus recruitment training were useful to face the campus interview



OVERALL REPORT FROM EXIT FEEDBACK 2019-20

D7) The Teacher Guardian scheme was helpful to me.

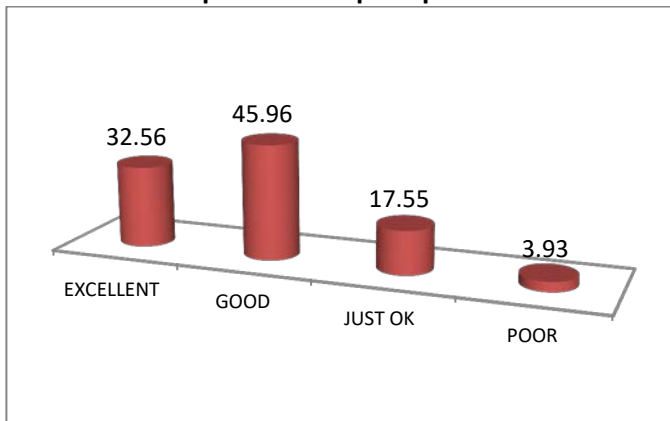


Dr. A.V. Patil
Dean (Academic Matters)

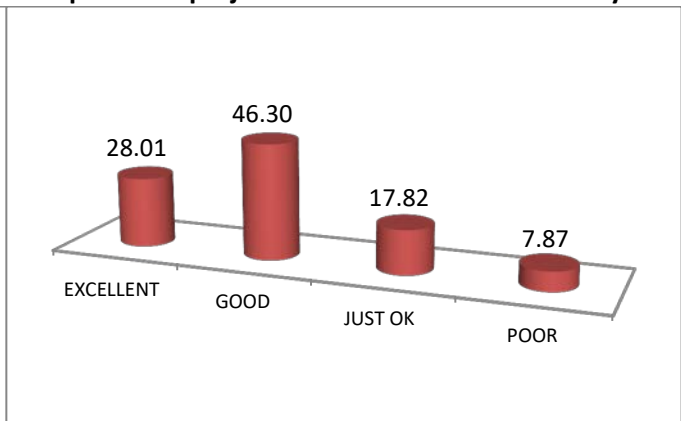
OVERALL REPORT FROM EXIT FEEDBACK 2019-20

E) Library facilities

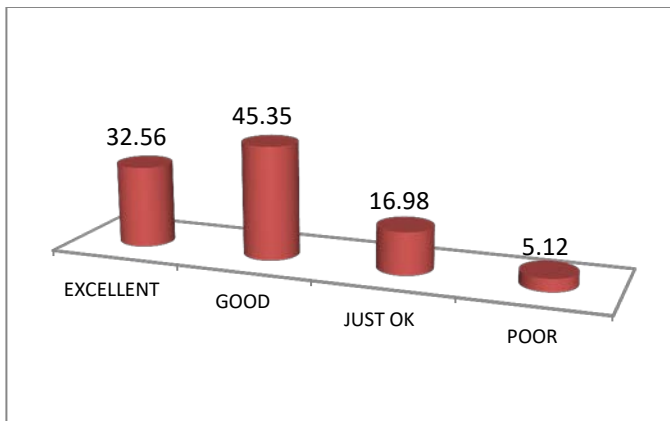
E1) Library timings were suitable, and book issue process was prompt.



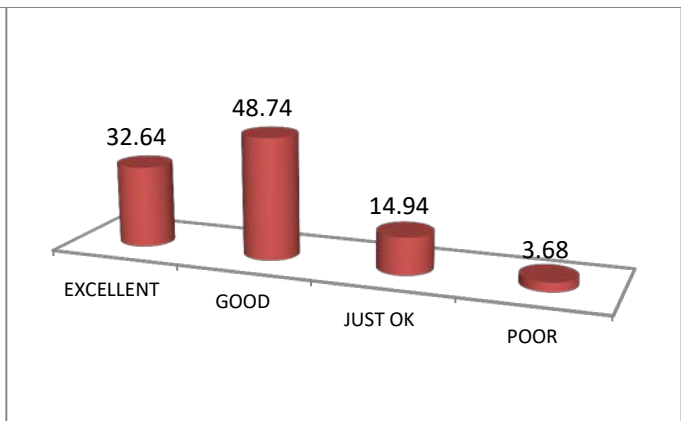
E2) Books/ Journals suggested in the syllabus and required for project were available in the library



E3) Services of library like resources for e-journals, E-learning resources, question paper sets, book bank facility were provided and helped me to a great extent



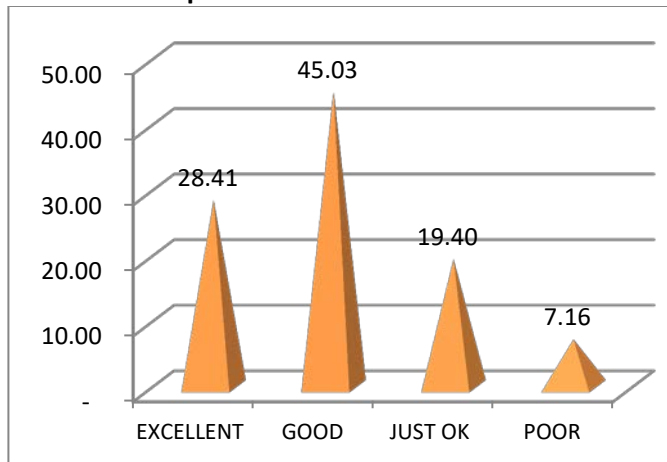
E4) Staff of Library is well behaved and helpful



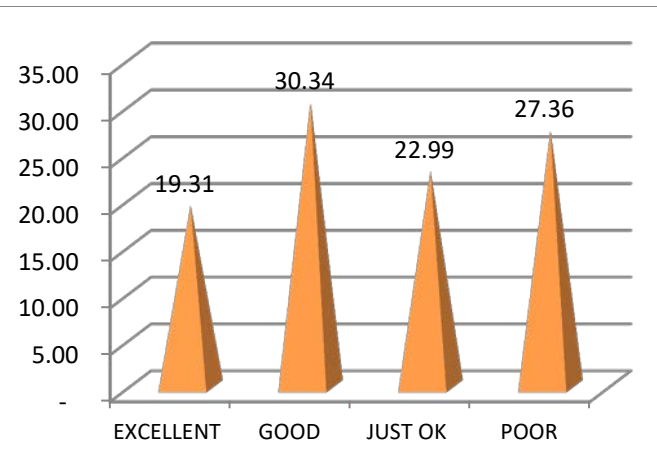
Dr. A.V. Patil
Dean (Academic Matters)

F) Computer and Internet facility

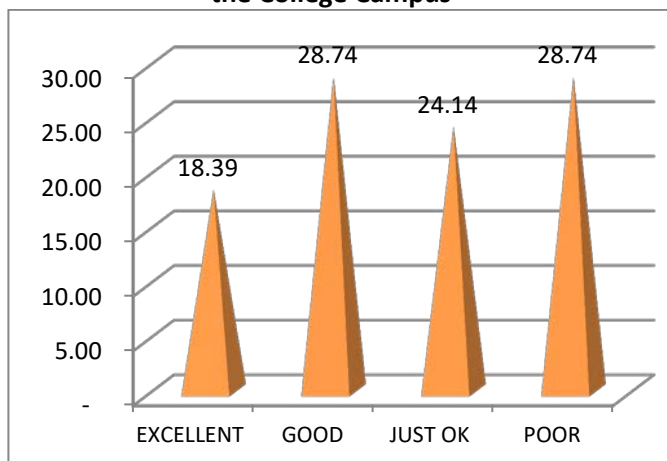
F1) Number and hardware configuration of computers and software in the department and in computer center were sufficient



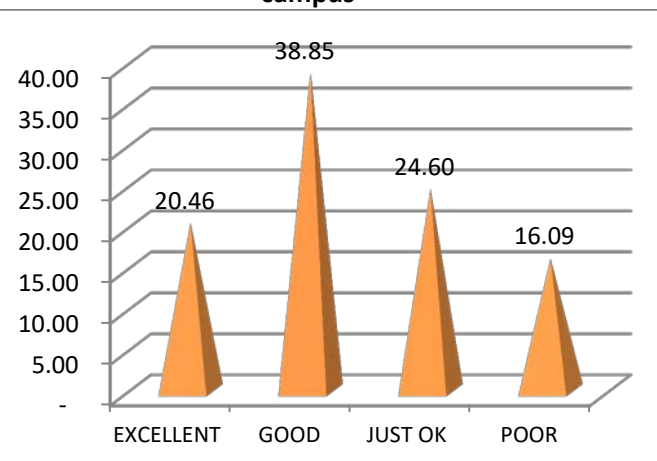
F2) Speed of internet connectivity was excellent



F3) Wireless internet facility is available throughout the College Campus



F4) Strong Firewall facility was available in entire campus

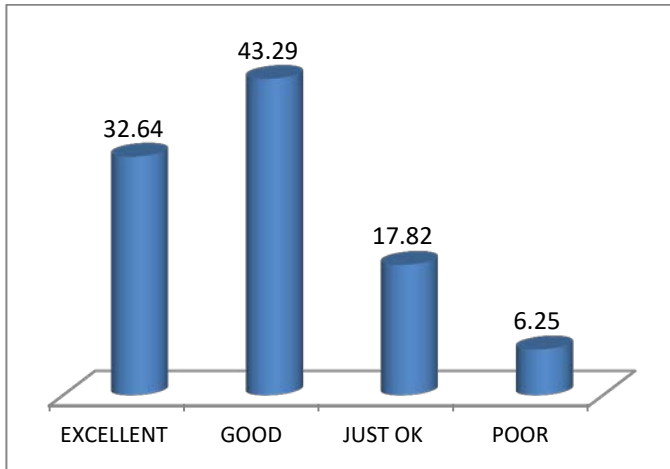


Dr. A.V. Patil
Dean (Academic Matters)

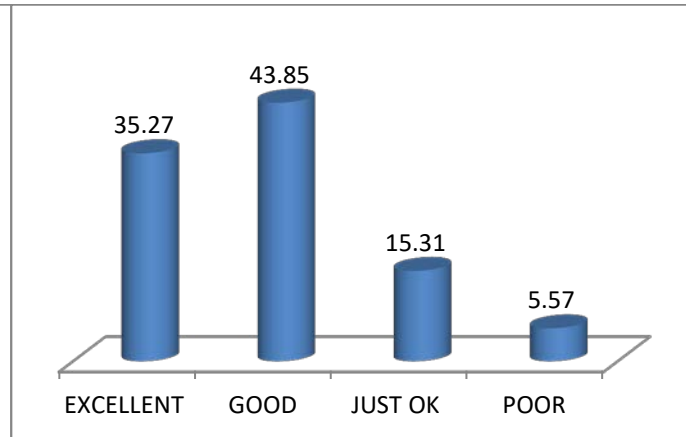
OVERALL REPORT FROM EXIT FEEDBACK 2019-20

G) Training and Placement support

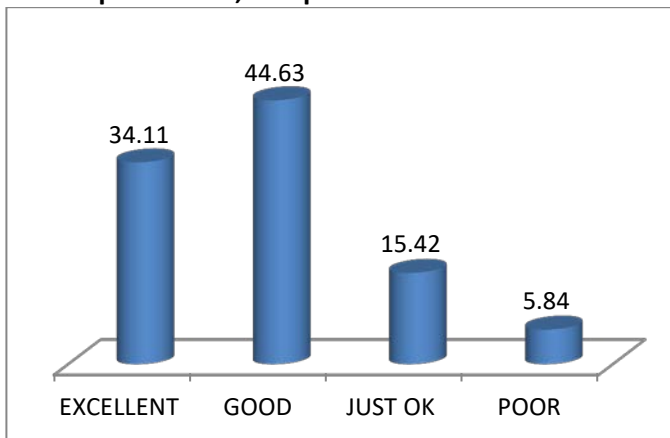
G1) Awareness about T&P Activities was given in details and it was effective



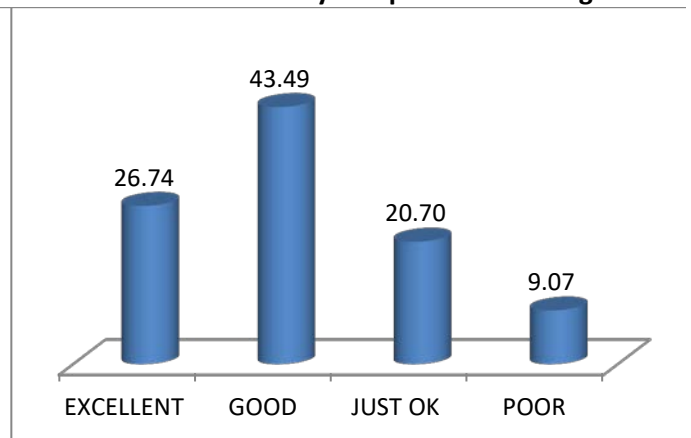
G2) T&P Department gave information about placement activities well in time



G3) Relevant support activities provided by T&P Dept. like CRT, ATE proved beneficial to me



G4) Assistance for Summer Internship like identification of industry and placement was good

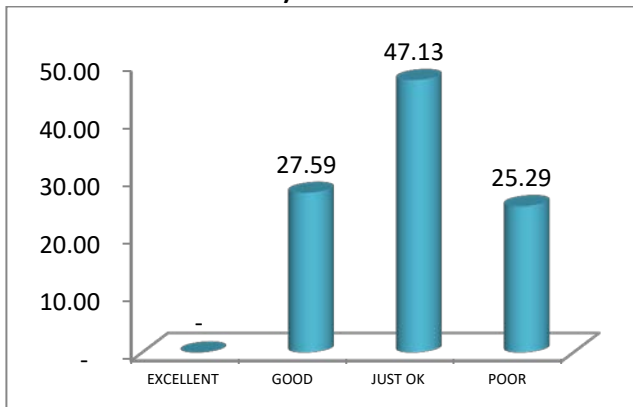


Dr. A.V. Patil
Dean (Academic Matters)

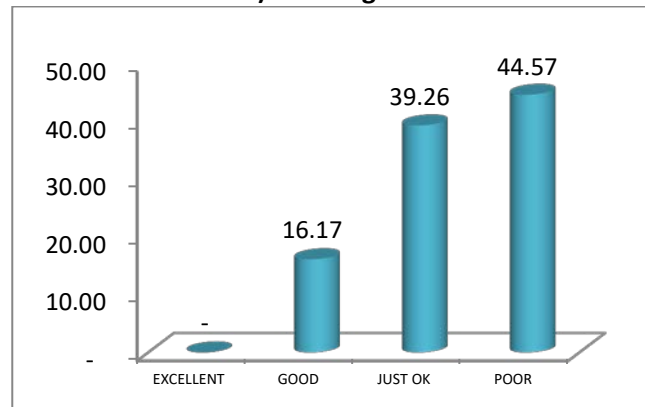
OVERALL REPORT FROM EXIT FEEDBACK 2019-20

H) Facilities of Institute

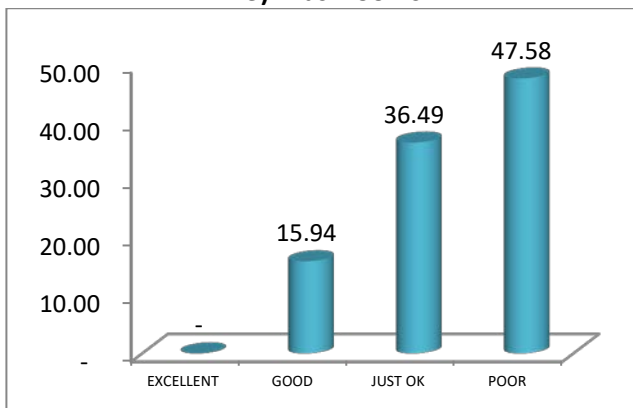
H1) Canteen



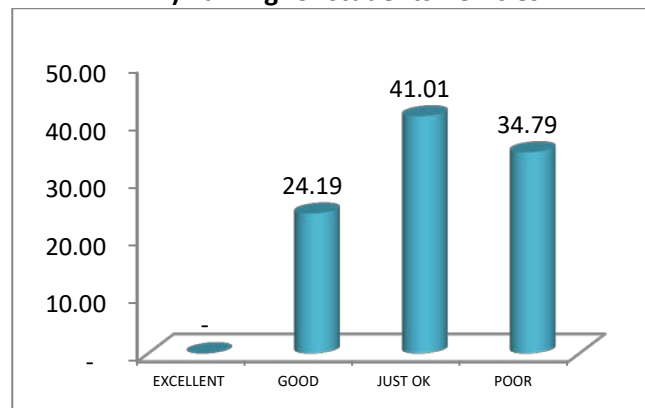
H2) Drinking water



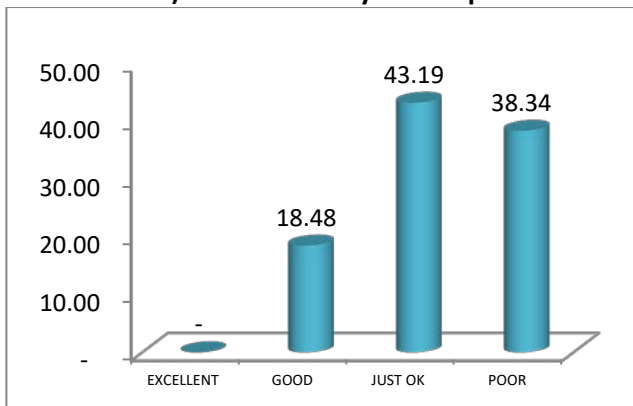
H3) Washrooms



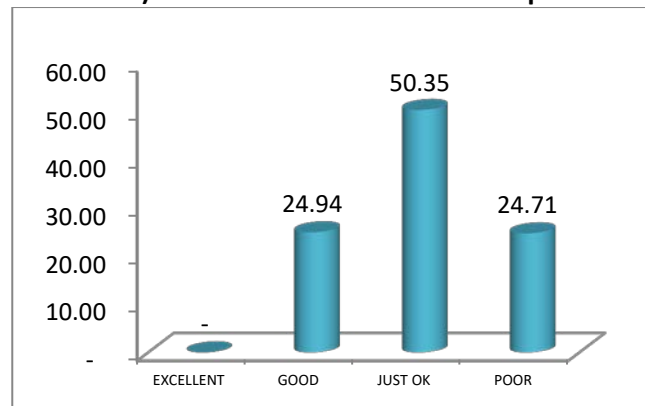
H4) Parking for students Vehicles



H5) Medical facility on campus

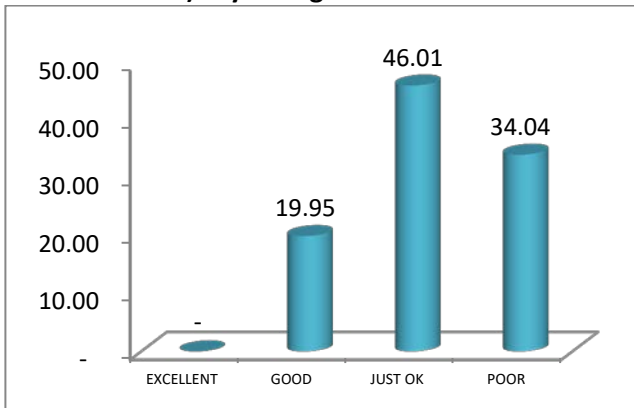


H6) Overall cleanliness on the campus

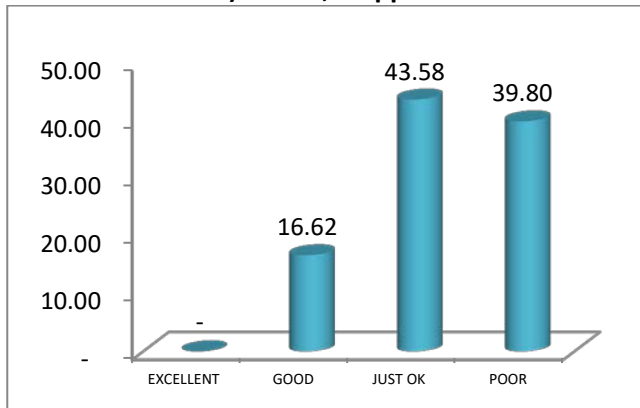


OVERALL REPORT FROM EXIT FEEDBACK 2019-20

H7) Psychological Counselor



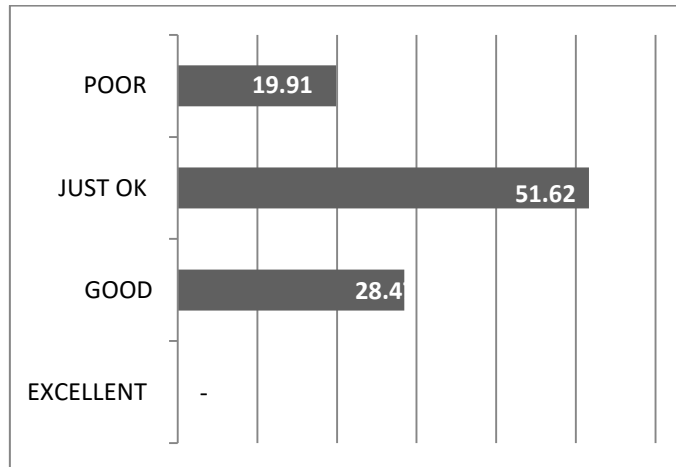
H8) Hostel, if applicable:



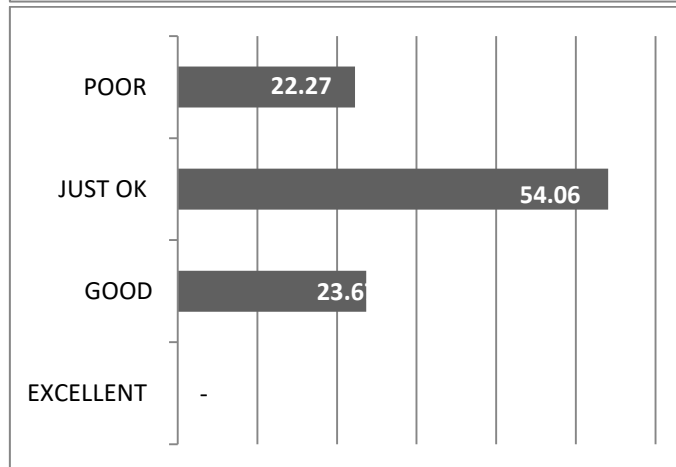
Dr. A.V. Patil
Dean (Academic Matters)

I) Interaction experience with the office bearers

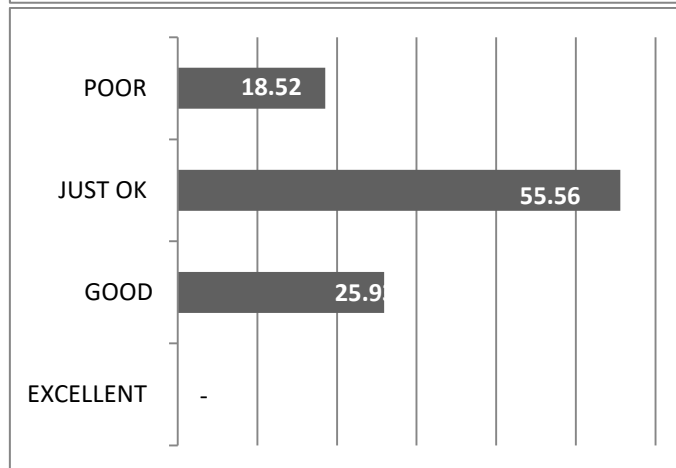
I1) Principal and his office



I2) Registrar

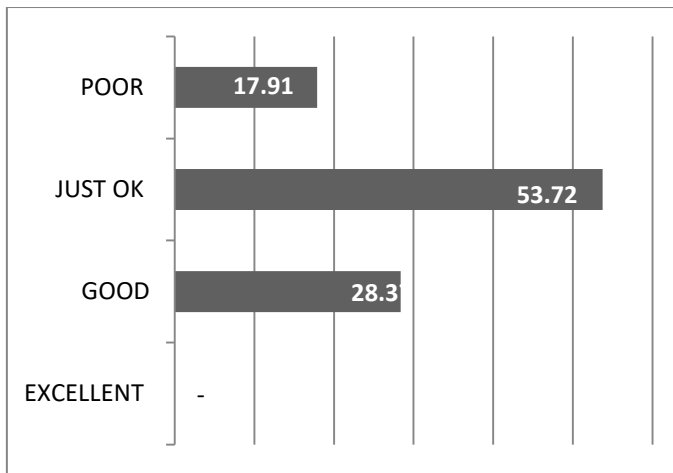


I3) Administrative Officer

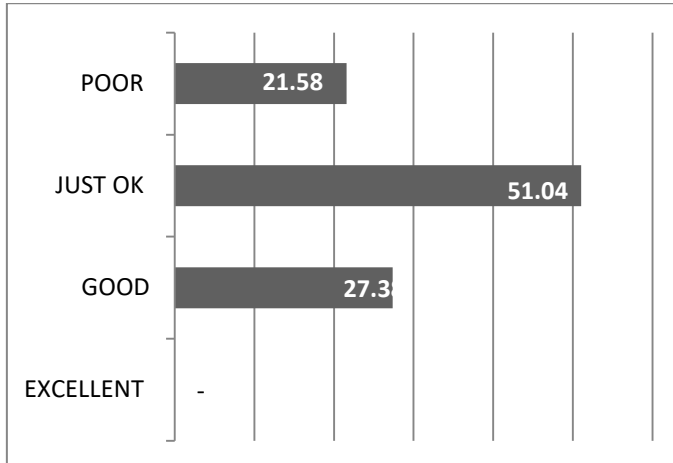


OVERALL REPORT FROM EXIT FEEDBACK 2019-20

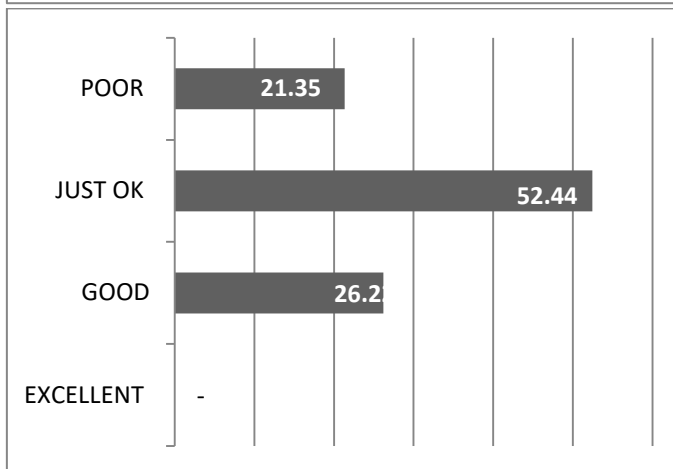
I4) Dean Academic Matters and his office



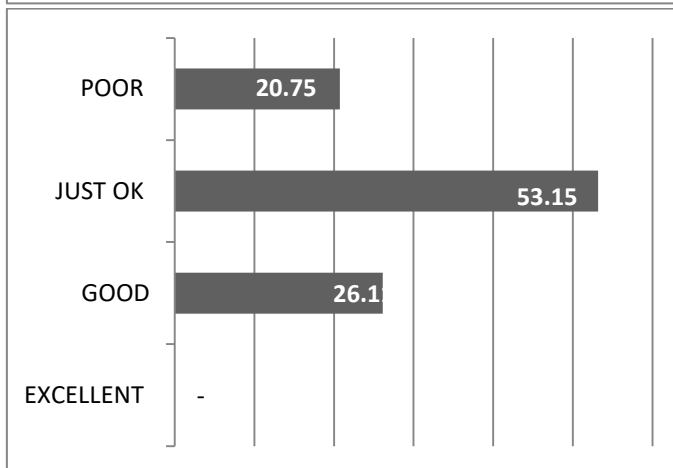
I5) Controller of Examinations and his office



I6) Faculty In charge of Student Activities

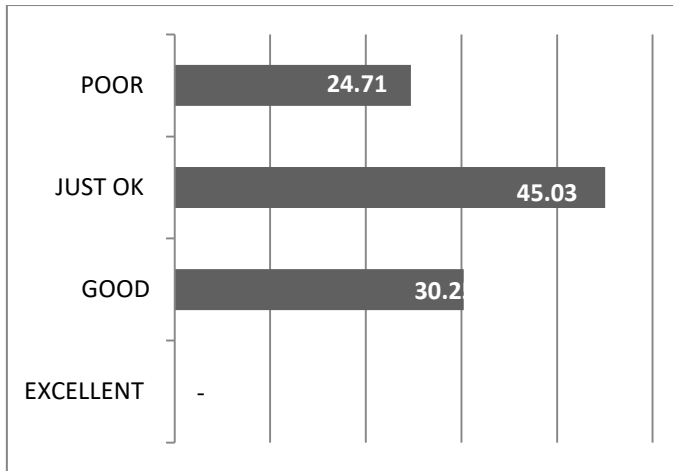


I7) Director Training

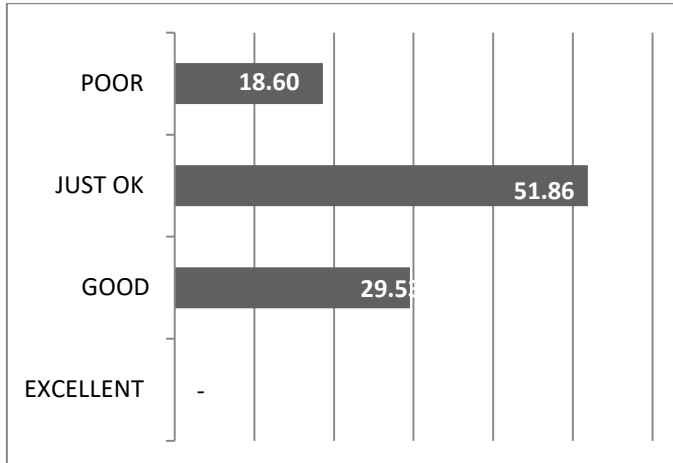


OVERALL REPORT FROM EXIT FEEDBACK 2019-20

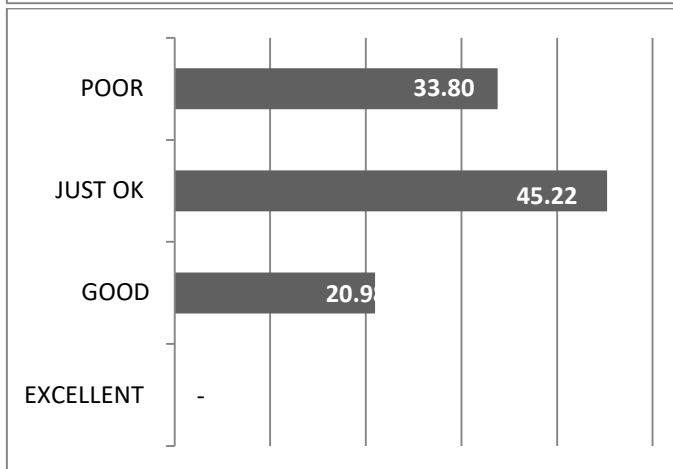
I8) Training and Placement officer



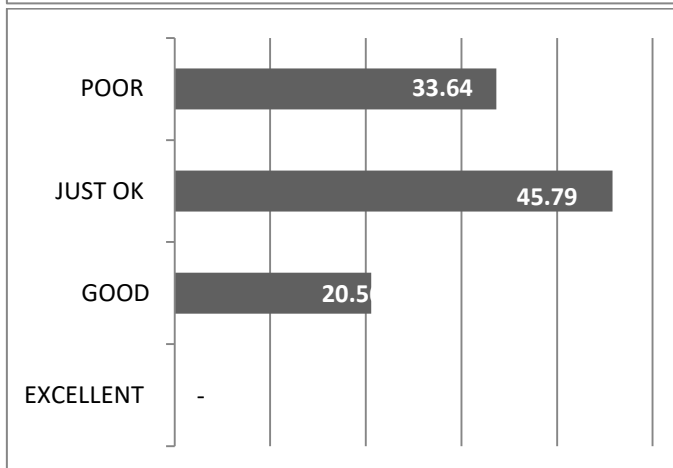
I9) Librarian



I10) Accounts section

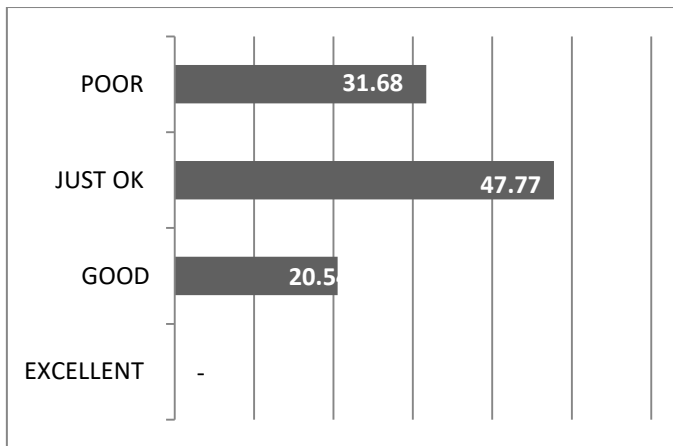


I11) Students section

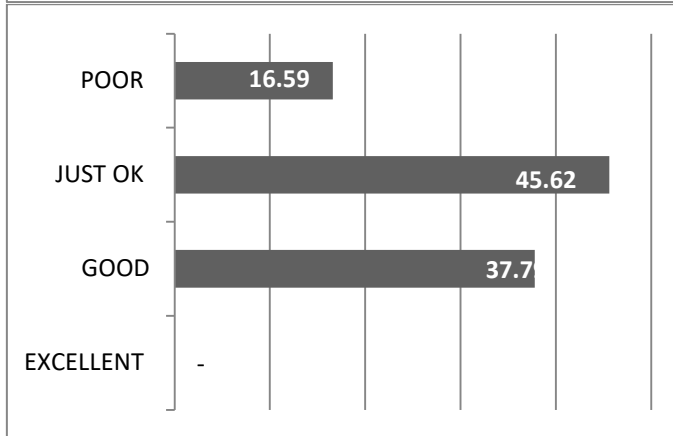


OVERALL REPORT FROM EXIT FEEDBACK 2019-20

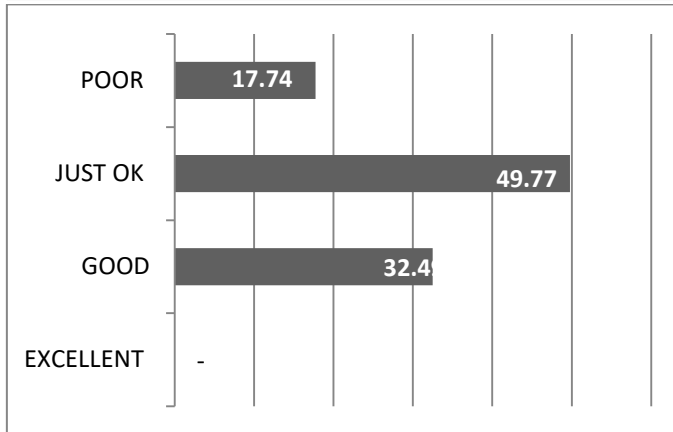
I12) Faculty In Charge Hostel, Warden and hostel office staff



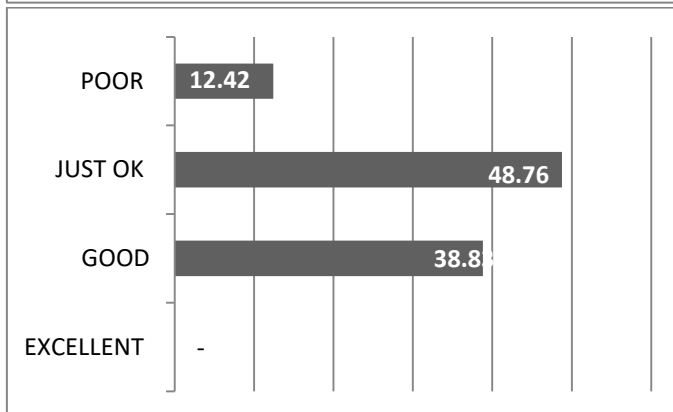
I13) Head of the Department



I14) Faculty



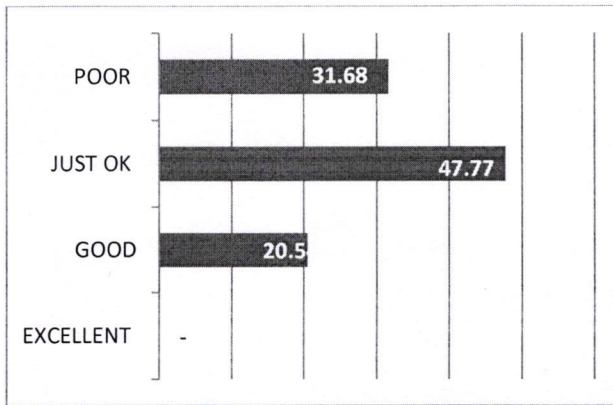
I15) Non-teaching / support staff



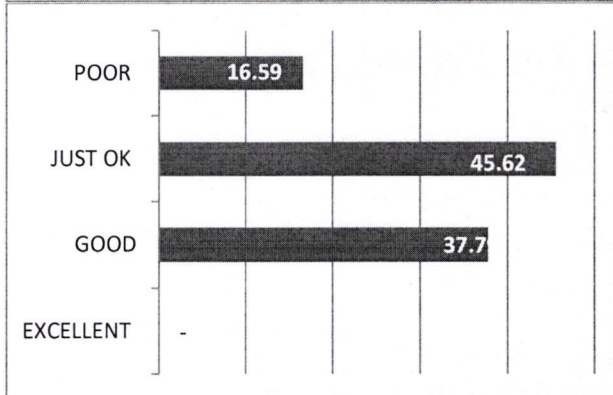
Dr. A.V. Patil
Dean (Academic Matters)

OVERALL REPORT FROM EXIT FEEDBACK 2019-20

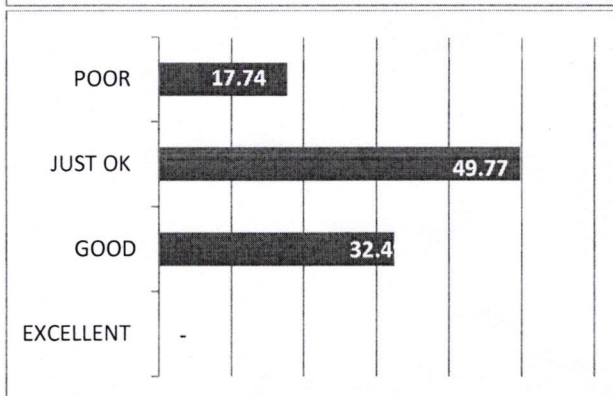
I12) Faculty In Charge Hostel, Warden and hostel office staff



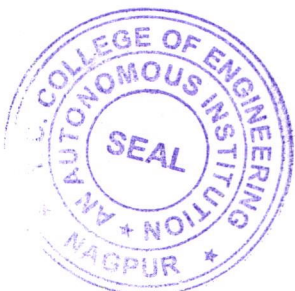
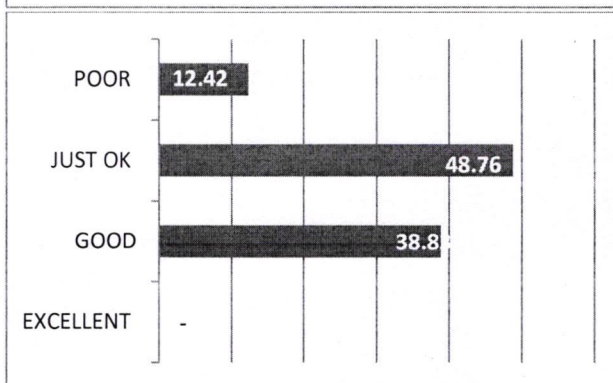
I13) Head of the Department



I14) Faculty



I15) Non-teaching / support staff




Principal
Yeshwantrao Chavan
College of Engineering
Wanadongri Hingna Road,
NAGPUR-441110


Dr. A.V. Patil
Dean (Academic Matters)